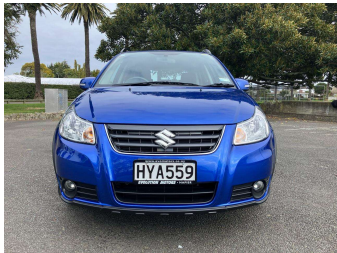


2015 Suzuki SX4 LTD 2.0 2WD 5DR CVT



Love this car?
Let's make it yours.
Apply today.

only
\$111.08*

*Total weekly payment of \$111.08 (including GST, deposit and interest) based on a 36 month term & 20% deposit. Total repayments \$20,526.35. Finance provided by mtf finance. Your trade can be your deposit.

EVOLUTION MOTORS
We make your buying process easier.

mtf finance

BuyerScore

#1 RATED
SMALL DEALERSHIP
Hawke's Bay
2020

Purchase Price

\$15,990

Includes GST, Registration & Licensing

Indicative repayments

\$111.08 per week*

Based on a 36 month term & 20% deposit.
Total repayments (156) = **\$20,526.35**

mtf finance

Gain peace of mind with
Mechanical Breakdown
Insurance. **Ask us how.**

provident insurance

Top features

- » # All our vehicles are...
- » 2 Wheel drive
- » 4 wheel ABS disc brake...
- » 5 door hatch
- » 60/40 split fold down...
- » AA Appraised
- » Adjustable steering co...
- » Automatic
- » Bluetooth Handsfree Ca...
- » Child seat anchor poin...
- » Climate control air co...
- » Cruise control
- » Cruise Control
- » Cup Holders
- » Dual front, side and c...
- » Easy interior access
- » Electric Mirrors (Retr...
- » Electric windows

Body Style

5 door, Hatch

Odometer

35,291 km

Engine

1995 cc, Timing Chain fuel

Fuel Type

-

Transmission

Automatic, Front Wheel

Wheels

16", Factory Alloys

VIN

JSAGYA51S00501837

Interior

Charcoal Grey, Fabric

Safety



Based on 2024 UCSR rating
for 07-14 models

Reg No.

HYA559

Ext Colour

Blue

History

NZ New, 4 owners

Seats

5 seats, Fabric

CO2 Emissions

★★★★☆

203 grams/km

Energy Economy

★★★★☆☆

Annual fuel cost of \$3,330
8.5L per 100km

Cost per year is an estimate based
on petrol price of \$2.80 per litre and
an average distance of 14000 km.
Emissions and Energy Economy
figures standardised to 3P WLTP.

Stock ID: 4089



Evolution Motors | Phone 06 834 2011 | Email evolutionmotors@xtra.co.nz
12 Kennedy Road, Napier, New Zealand
www.evolutionmotors.co.nz

B | **★★★★★**
4.87 | 493 reviews

* Evolution Motors is not a lender nor a financial adviser. Any amounts displayed should not be seen as an offer of finance or taken as financial advice. The interest rate, fees and loan term used in this calculation may not actually represent those available from lenders. Actual interest rates, fees and loan terms will vary per lender and are typically based on an assessment of your credit risk and responsible lending criteria. Any repayment amounts displayed are indicative only and have been calculated using several other indicative inputs. The interest rate used in this calculation is an arbitrary 12.95%, however exact interest rates vary per lender. The term of the loan used in this calculation is 36 month. Exact terms available vary per lender although options typically include 6, 12, 18, 24, 36, 48 and 60 months. This calculation also includes two typical mandatory fees charged by lenders. These are an account admin fee of \$8.50 per week (other payment frequencies may be available) and a one-off establishment fee of \$410.00. Typically, this fee can be paid upfront or, as in this calculation, be capitalised over the contract term, ie. included in the loan amount. These fees can vary per lender and other non-mandatory fees and charges may also apply. The total amount of repayments has been calculated by multiplying 156 weekly repayments (based on a 36 month term) by the weekly repayment amount of \$111.08 which equals \$20,526.35. This calculator does not consider any of your own personal circumstances and we strongly suggest you seek budgeting advice prior to committing to any loan contract. Responsible lending criteria and lender terms and conditions will likely apply to any finalised loan contract. Proof of security and/or vehicle insurance may also be required before proceeding.