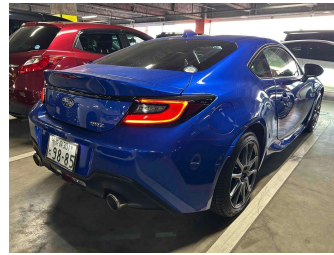


2023 Subaru BRZ 2.4 R



Love this car?
Let's make it yours.
Apply today.

only
\$291.34*

*Per week based on 2023/2024 Finance, 20% deposit, Total amount repaid of \$54,447.43. Finance: 12.95% (APR), 36 months, 156 payments.

FRIENDLY COMPETITIVE FINANCE
FLEXIBLE DEPOSIT TERMS
YOUR TRADE CAN BE YOUR DEPOSIT

EVOLUTION MOTORS
Where Customers Become Friends

mtf finance
provident insurance



Purchase Price **\$44,990**

Includes GST, Registration & Licensing

Indicative repayments
\$291.34 per week*

Based on a 36 month term & 20% deposit.
Total repayments (156) = **\$54,447.43**

Gain peace of mind with
Mechanical Breakdown
Insurance. **Ask us how.**

Top features

- » # All our vehicles are...
- » 2 door sports
- » 4 Seater
- » 4 Wheel disc brakes
- » 6 Speed Manual
- » ABS Braking
- » Auto air conditioning
- » Cruise control
- » Cup Holders
- » Current shape model
- » Dual exhaust tailpipes
- » Electric Mirrors (Retr...
- » Electric windows
- » Electronic Stability C...
- » Factory 17" alloy whe...
- » Factory security syste...
- » Fantastic exterior col...
- » Floor mats

Body Style
2 door, Sports

Odometer
14,101 km

Engine
2400 cc, Internal Combustion

Fuel Type
Petrol

Transmission
6-Speed Manual, Rear Wheel

Wheels
17", Factory Alloys

VIN
7AT0GF1YX26013519

Interior
Charcoal Grey, Fabric

Safety
-

Reg No.
-

Ext Colour
Blue

History
-

Seats
4 seats, Fabric

CO2 Emissions
-

Energy Economy
-

Stock ID: 4172



Evolution Motors | Phone 06 834 2011 | Email evolutionmotors@xtra.co.nz
12 Kennedy Road, Napier, New Zealand
www.evolutionmotors.co.nz

* Evolution Motors is not a lender nor a financial adviser. Any amounts displayed should not be seen as an offer of finance or taken as financial advice. The interest rate, fees and loan term used in this calculation may not actually represent those available from lenders. Actual interest rates, fees and loan terms will vary per lender and are typically based on an assessment of your credit risk and responsible lending criteria. Any repayment amounts displayed are indicative only and have been calculated using several other indicative inputs. The interest rate used in this calculation is an arbitrary 12.95%, however exact interest rates vary per lender. The term of the loan used in this calculation is 36 month. Exact terms available vary per lender although options typically include 6, 12, 18, 24, 36, 48 and 60 months. This calculation also includes two typical mandatory fees charged by lenders. These are an account admin fee of \$8.50 per week (other payment frequencies may be available) and a one-off establishment fee of \$410.00. Typically, this fee can be paid upfront or, as in this calculation, be capitalised over the contract term, ie. included in the loan amount. These fees can vary per lender and other non-mandatory fees and charges may also apply. The total amount of repayments has been calculated by multiplying 156 weekly repayments (based on a 36 month term) by the weekly repayment amount of \$291.34 which equals \$54,447.43. This calculator does not consider any of your own personal circumstances and we strongly suggest you seek budgeting advice prior to committing to any loan contract. Responsible lending criteria and lender terms and conditions will likely apply to any finalised loan contract. Proof of security and/or vehicle insurance may also be required before proceeding.